


Still haven't
found what
you're looking
for?



A young man with dark hair, wearing a blue patterned cardigan over a dark t-shirt, is sitting and reading a book. He is in a library or study area. Behind him is a dark wooden bookshelf filled with books, some of which have colorful spines (red, blue, green). To the left, there is a black lamp on a white table. The wall behind the bookshelf is covered in a collage of newspaper clippings. A blue rectangular box is overlaid on the top left of the image, containing white text.

*'I've had the best
experience here. I
have made so many
friends from all over
the world that I will
keep for life!'*

Ho Cheol, 30, Korea



We were delighted to have been awarded the ST Star English Language School Europe 2016 award in London on 3rd September 2016. ISI Dublin also won the award in 2014 and this is only the third time any school has won the award twice and is a first for a school from Ireland. Pictured Peter Hutchinson (Chief Operations Officer), Brian Burns (Managing Director) and James Dorrian (Executive Director)



Contents

Dublin, Ireland	4
ISI, Dublin	7
Team	10
ENGLISH COURSES	15
Standard English Programme	16
Intensive English Programmes	17
Examination and Foundation Programmes	20
Academic Year English Programme	21
Level + Qualifications	25
School Life	29
Accommodation	35
Map	38
Frequently Asked Questions	41
HIGH SCHOOL PLACEMENTS	45
JUNIOR PROGRAMMES	47



Dublin, Ireland



With a population of just over one million, Dublin, the capital of the Republic of Ireland, is the best place in the world to study! With fifty per cent of its inhabitants aged under 25, it is a city overflowing with music, art, theatre, culture and fashion! Once the home of writers James Joyce, Bram Stoker and Oscar Wilde, today its celebrated inhabitants and natives include singers Bono, Sinéad O'Connor and Hozier as well as actors Saoirse Ronan and Colin Farrell.

With its international and highly educated workforce, Dublin has been chosen by many multi-national companies, particularly internet-based ones, as the location for their European headquarters. Google, Facebook, LinkedIn and Twitter all have substantial bases in the city employing thousands of internet professionals from Ireland and all over the world.

The city boasts a large number of museums, art galleries and historical sites, most of which offer free entry. ISI is ideally located in the city centre, just across the river from Temple Bar – Dublin's cultural quarter. The area around the school is famous for its charming fruit and vegetable markets, the bustling Henry Street shopping district as well as a variety of ethnic restaurants, trendy cafés and curiosity shops on Capel Street.

One of our buildings, seen here in the background photo, is located just off Capel Street. It is a beautiful 18th century stone warehouse building. A secret treasure is hidden in its vaults: the remains of the 12th century St. Mary's Abbey. Referred to in James Joyce's *Ulysses* as 'the most historic spot in all Dublin', this small but beautiful 800-year old abbey run by the OPW, is regularly used by ISI students for school plays, projects, concerts and talent shows.



ISI



ISI, Dublin

At ISI we love what we do. We don't just teach courses, we offer you a complete experience combining the best academic programmes with high-quality accommodation, an exciting social programme, interesting student clubs, great evening events and adventurous weekend excursions. Academic excellence is at the heart of what we do. ISI is recognised by Quality and Qualifications Ireland for English language teaching. We are also a recognised examination centre for the Trinity College London ISE examination suite. We also prepare students for the Cambridge Examinations and IELTS. Using the most advanced teaching methods and the newest technology, our students achieve a very high exam success rate.

Founded in 2001, ISI occupies two uniquely styled year-round centres in Dublin. Our original school is located in a beautiful 18th century stone warehouse, converted into a school in 2001. Its interior combines original stone walls and wooden floors with a sleek and modern design. Its walls are decorated with inspirational art pieces and

murals by local artists. Both upcycled and designer furniture is used in the student recreational areas to create a 'cool and contemporary 'café/bar' feeling.

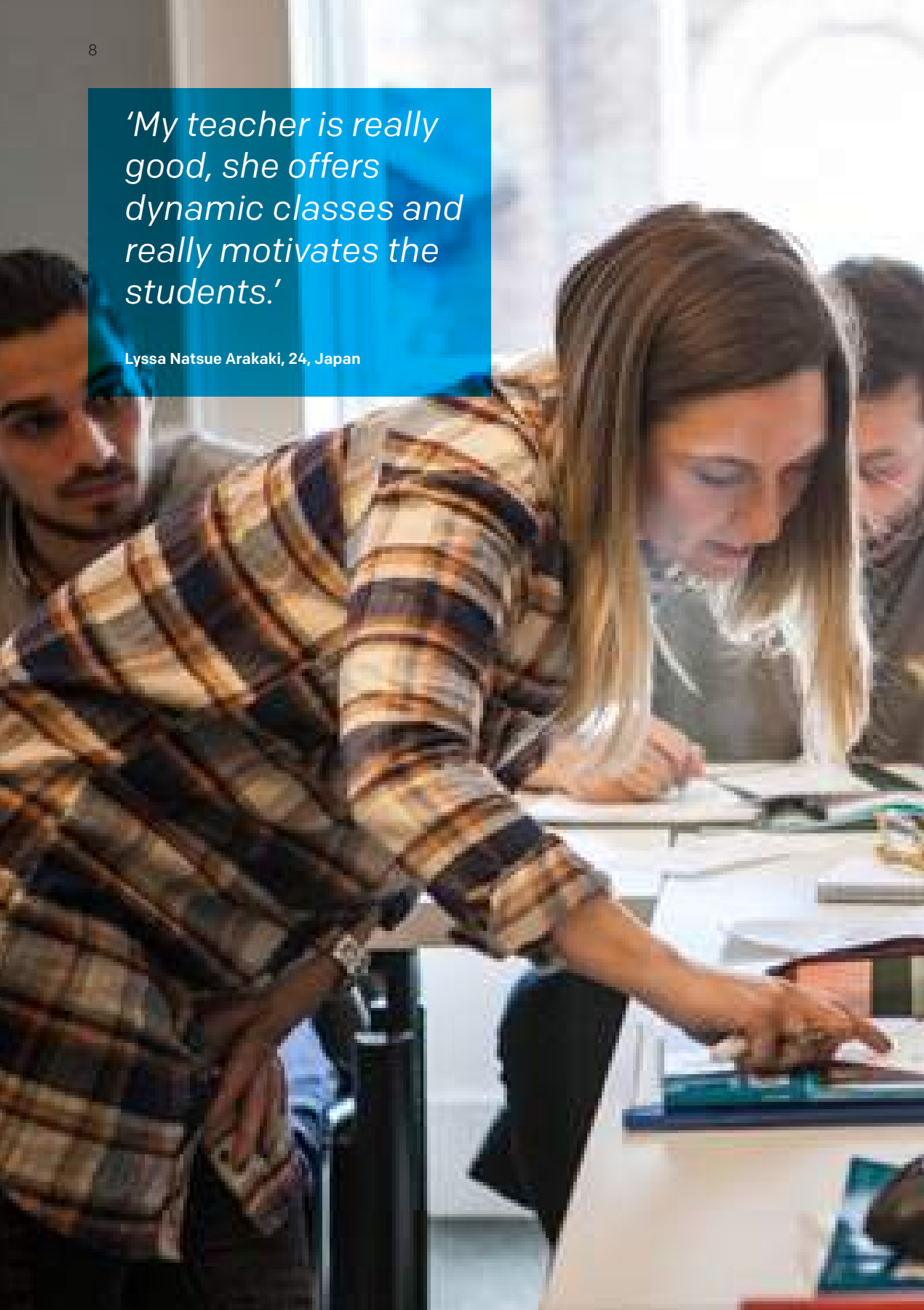
Our new centre is housed in a beautiful redbrick Georgian building at 39 Parnell Square West, Dublin's new 'Cultural Quarter', just 10 minutes' walk from Meetinghouse Lane. The building combines large & ornate period rooms with modern furniture & artwork to create a wonderful new learning space. The area around the school is steeped in Irish history, with many of the neighbouring buildings playing host to significant scenes of the Easter rising of 1916.

Both buildings offer great facilities including spacious classrooms with electronic interactive whiteboards, student computers, WiFi and a great discounted café.

We hope this brochure will answer most of your questions but feel free to contact us anytime for more information.

'My teacher is really good, she offers dynamic classes and really motivates the students.'

Lyssa Natsue Arakaki, 24, Japan





Team



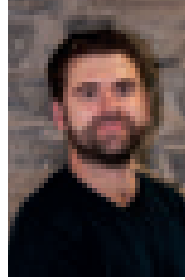
1.



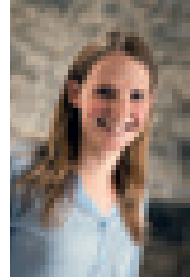
2.



3.



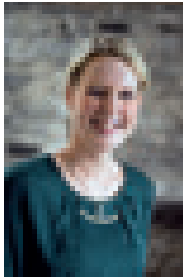
4.



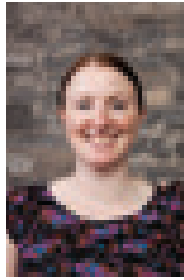
5.



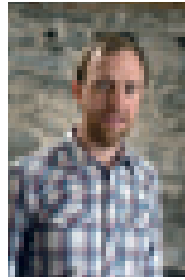
6.



7.



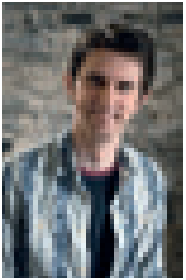
8.



9.



10.



11.



12.



13.



14.



15.

1. Karen, Accommodation Officer

2. Eamon K., Teacher

3. Tanya, Teacher

4. Peter, Chief Operations Officer

5. Claire, Teacher

6. Elaine H., Marketing Manager

7. Alison, Teacher

8. Andrea, Assistant DoS

9. Eamon M., Teacher

10. Brian, Managing Director

11. Ciarán, Teacher

12. Maija, Café Manager

13. Clodagh, Assistant DoS

14. Guillermo, Admissions

Manager

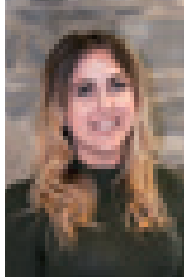
15. Kyle, Teacher



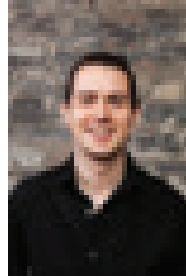
16.



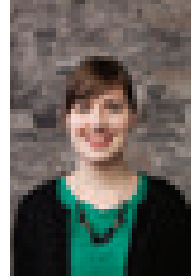
17.



18.



19.



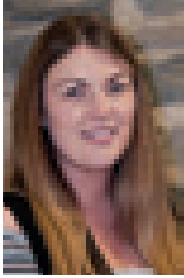
20.



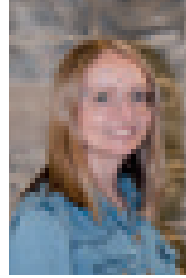
21.



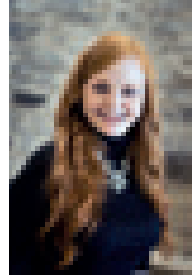
22.



23.



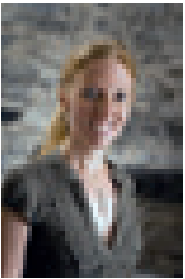
24.



25.



26.



27.



28.



29.



30.

16. James, Executive Director

17. David, Teacher

18. Lauren, High School Coordinator

19. Ronan, Teacher

20. Emily, Teacher

21. Vourneen, High School
Manager

22. Jennifer, Academic Director

23. Rachel, Accounts

24. Nico, Teacher

25. Lisa, Teacher

26. Una, Teacher

27. Gosia, Teacher

28. Trish, Operations Manager

29. Oisín, Teacher


30. Conor, Teacher

'I really enjoy hanging out in the ISI café in Parnell Square. It's really comfortable, it has nice computers, WiFi, comfortable chairs to relax, really nice coffee, delicious brownies and low student prices!'

Pauline Delvaux, 21, Belgium





A student testimonial graphic with a teal background. The text is white and reads: 'ISI have the best teachers and offer a unique experience, everything is done for the students to enjoy every day in Dublin.' Below the text, the name 'Jerushka Galaviz Silva, 19, Brazil' is written in white. The background of the entire image shows a young man and woman sitting at a desk, smiling and looking at papers. A map of Ireland is mounted on the wall behind them.

'ISI have the best teachers and offer a unique experience, everything is done for the students to enjoy every day in Dublin.'

Jerushka Galaviz Silva, 19, Brazil

English Courses

Choosing to study English could be one of the most important decisions you will ever make! Fluency and competence in the language is now a necessity for anyone who wants to travel abroad and a prerequisite for most careers. An English course at ISI is a unique experience.

Our teachers are all university graduates with recognised teaching qualifications, experience and most importantly, a love of their profession. We offer a range of programmes to suit all requirements, combining the basic language skills with a full range of specialist classes and internationally renowned examinations.

Our classes incorporate the use of Digital Interactive Whiteboards, the latest linguistic software and the Internet.

All English programmes are recognised by ACELS, a service of Quality and Qualifications Ireland, for English language teaching (ELT).

Standard English Programme

This programme is suitable for everyone. It provides a good foundation in the main linguistic skills, with a strong focus on communication. It is a less intensive programme, allowing time for out-of-class activities.



General English 15 (GE15)

With the main focus on communication skills, this 15-hour per week course also provides a solid foundation in the key skills required in the Trinity College London ISE Examinations, covering grammar and the main linguistic skills of reading, writing, listening and speaking. The method used is task-based, which means that by the end of each level students are expected to be able to complete a certain amount of tasks through English. There is a central course book and workbook and teachers supplement these using authentic materials such as newspapers, magazines, menus, manuals, brochures and a range of other books.

All courses incorporate the use of electronic interactive whiteboards, the Internet and audio-visual technology.

Levels

A1 – C2

Schedule

09-00 – 12.15 (morning class)

13.30 – 16.40 (afternoon class)

Course start dates

Any Monday of the year, excluding Christmas vacation

Hours per week

15

Duration

1 – 24 weeks

Key points

- Suitable for any student who wishes to improve their English in a less intensive way
- General 'all-round' approach
- Revision of major grammar and vocabulary at each level
- In-house examinations
- More time for out-of-class activities
- Incorporates Trinity College London ISE Examination skills

Award

ISI Certificate in English

Students have the option of sitting the relevant Trinity College London ISE examination, which takes place in the school.

Entry requirements

Students must be at least 18 years old on the start date. Those aged 16 –17 may be accepted subject to parental or guardian consent.

Students should have a basic knowledge of English (A1 level). Those who are complete beginners will have to enter a one-to-one programme until A1 level is achieved.

Intensive English Programmes

These programmes are suitable for students who require a more intensive course of study, with a particular focus on certain skills or topics. Students take the standard programme (opposite) and an additional five or ten lessons in a special topic.



General English 20 (GE20)

General English 25 (GE25)

The GE20 programme follows the same structure as described under GE15, but there are 5 or 10 extra electives each week. Electives include:

- Pronunciation
- Grammar in context
- Reading and Listening
- Conversation Skills
- Advanced writing skills

Levels

A1 – C2

Elective Schedule

8.00 – 9.00

12.25 – 13.25

Cambridge Examinations 20 (CE20)

The CE20 programme follows the same structure as described under GE15, but there are 5 extra classes of Cambridge Examination Preparation (FCE or CAE) each week.

Levels

FCE and CAE (B2 – C1)

Elective Schedule

8.00 – 9.00

12.25 – 13.25

Business English 20 (BE20)

The BE20 programme follows the same structure as described under GE15 but includes 5 extra classes in Business English. The Business Writing Skills component prepares students for all written communication that may arise in a professional context while the Interpersonal and Communication Skills component prepares students for verbal interactions.

Levels

B1 – C1 (mixed class)

Elective Schedule

8.00 – 9.00

12.25 – 13.25

IELTS 20 (IE20)

The IE20 programme follows the same structure as described under GE15, but there are 5 extra classes of IELTS examination preparation each week.

Levels

FCE and CAE (B2 – C1)

Elective Schedule

8.00 – 9.00

12.25 – 13.25

'Interactive whiteboard technology in the classroom enhances the learning experience and allows students to develop new linguistic skills in a fun and interactive environment.'

Ciarán, teacher



2. Work in pairs. Look at the pictures in File 10 on p. 107 and discuss their qualities:

- Which of these animals do you like? Why?
- Are you bored of any of these animals? Why?



1. Sparrows



2. Cat



3. Bear



4. Eagle



5. Whale



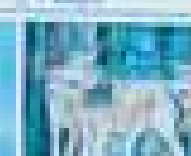
6. Tortoise



7. Pig



8. Shark



9. Wolf



10. Parrot



11. Frog



12. Parrot



13. Frog



14. Scorpion

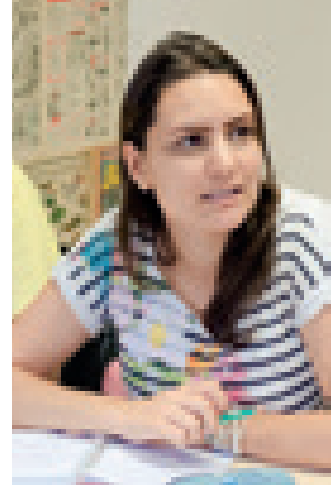


15. Bear

Navigation icons for a presentation software, including arrows, a search icon, and a refresh icon.

Trinity College London and Cambridge Examination Preparation

Our General English programmes prepare students for the Trinity College London ISE Examinations. In addition, students can take intensive programmes in Cambridge First Certificate Examination (FCE) and Cambridge Advanced Examination (CAE) level, as well as IELTS (aim level 6).



Trinity College London Examinations

Students studying any General English course at ISI, will study the key skills for successful completion of the Integrated Skills in English (ISE) examination. The ISE assesses a student's ability to interact in English in an authentic and meaningful way through the use of integrated reading and writing tasks and integrated speaking and listening tasks. Preparing for ISE builds real-life English skills and transferable skills required for academic study and employment.

Intensive Examination FCE (FCE20) Intensive Examination CAE (CAE20)

The best way to prepare for an examination is to take a dedicated 9 – 13 week course. Prior to arriving at ISI students do a placement test to ascertain their level. Based on this result, the student will be advised on which course best suits their needs. Those with an English level well below FCE may be advised to take a General English course instead. The dates of these programmes are fixed and lead up to the Cambridge exam dates. Students should contact our office in advance of the application to receive the exact start date, exam date and exam fee.

Schedule

9.00 – 13.25

Levels

B2 – C1

Duration

9 – 13 weeks (please contact our office in advance for the exact dates)

Entry requirement

FCE20: B2 English

CAE20: C1 English

Academic Year English Programmes

This long-term programme is designed to allow students to progress through two to three levels on the Council of Europe grading system over an 8-month period and to gain a professional, internationally recognised English qualification. It also offers students from outside Europe, the option of working in Ireland.



Academic Year 15 (AY15)

With the main focus on communication skills, this 15 hour per week course also provides a solid foundation in the key skills required for the Trinity College London ISE Examinations covering grammar and the main linguistic skills of reading, writing, listening and speaking. The method used is task-based, which means that by the end of each level students are expected to be able to complete a certain amount of tasks through English. There is a central course book and workbook and teachers supplement these using authentic materials such as newspapers, magazines, menus, manuals, brochures and other books. All courses incorporate the use of electronic interactive whiteboards, the Internet and audio-visual technology.

Levels

A1 – C2

Schedule

09-00 – 12.15 (morning class)
13.30 – 16.40 (afternoon class)

Course start dates

Any Monday of the year, excluding Christmas vacation

Duration

8 months (minimum 25 weeks study +1 week exam)

Academic Year 20 (AY20)

The programme follows the same structure as the AY15 programme above but includes 5 extra electives per week. Electives include:

- Cambridge Examination
- IELTS
- Business English
- Advanced writing skills
- Grammar in context
- Pronunciation
- Reading and Listening
- Conversation Skills

Elective Schedule

8.00 – 9.00
12.25 – 13.25

Awards

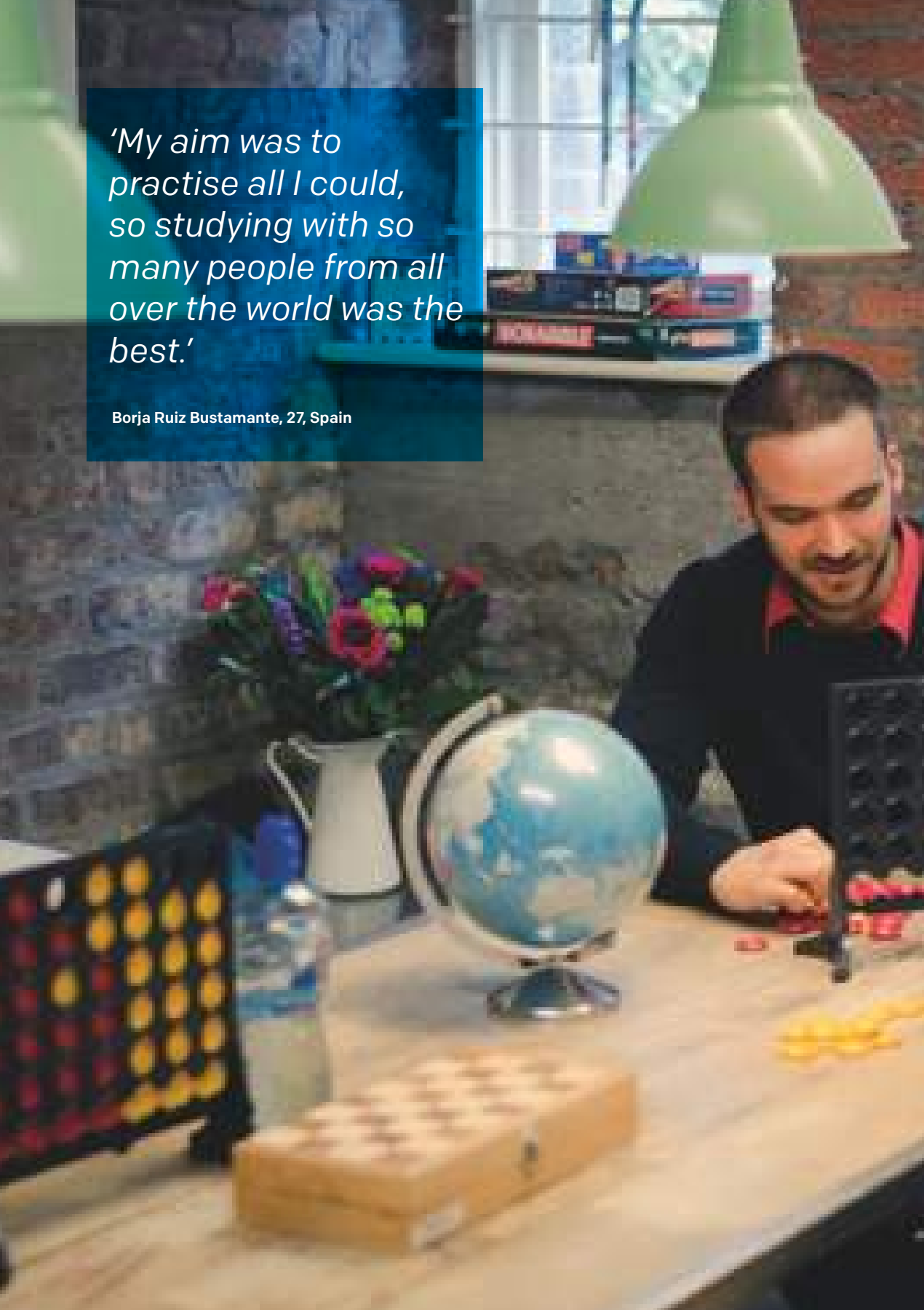
All students who successfully complete the programme receive the ISI Certificate in English. Non-EU students must complete an official examination at the end of the programme such as Trinity ISE, TIE, FCE, CAE, IELTS etc.

Entry requirements

Students should be at least 18 years old on the course start date and should have a basic A1 level of English. Students tested at A0 level cannot enter the programme and should take one-to-one tuition until A1 level is reached.

'My aim was to practise all I could, so studying with so many people from all over the world was the best.'

Borja Ruiz Bustamante, 27, Spain







Levels & Qualifications

English Course Levels

ISI A0
Complete Beginners

ISI A1
Elementary

ISI A2
Pre-Intermediate
Cambridge KET
TIE A2
ISE Foundation

ISI B1
Intermediate

Cambridge PET
IELTS 4 – 5
TIE B1
ISE1

ISI B2
Upper Intermediate

Cambridge FCE
IELTS 5 – 6
TIE B2
ISE 2

ISI C1
Advanced

Cambridge CAE
IELTS 6.5 – 8
TIE C1
ISE 3

ISI C2
Very Advanced

Cambridge CPE
IELTS 9
TIE C2
ISE 4

'The school is in a super location in centre of town, next to all the shops, nice cafés, bars and restaurants.'

Chloé, 25, France



'The teachers are amazing and they use interactive whiteboards which makes the classes really dynamic and fun.'

Adriana, 33, Mexico





'ISI's café is a great place for students to meet and relax with their new friends. All prices are discounted, so students can buy their lunch for €2.50 Amazing!'

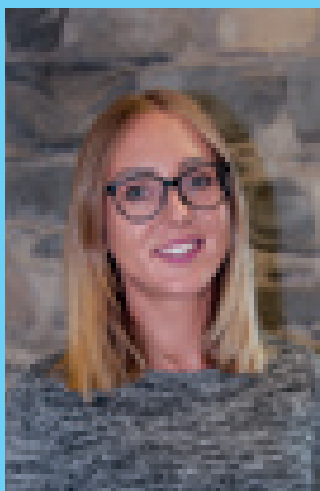
Jason, 26, Venezuela

School Life

Along with our study programmes we have a range of activities and events organised to help you get the best out of your experience here. The social aspect of ISI is an important part of your time with us; a time to learn, meet new people and live within a unique community and environment.

These are examples of just some of the kinds of clubs and group events you can take part in:

- Drama Club
- TV Club
- Afternoon Excursions
- Music Club
- Sports
- Seasonal Parties
- Pub Evenings
- Irish Cultural Nights
- Saturday Excursions



'I organise the social programme for the students throughout the year, ensuring that you make friends and experience everything that Dublin has to offer. I look forward to meeting you!'

Zivile, Marketing & Student Services Coordinator











'I had a really nice host family and I really enjoyed my stay in their house. It is where you learn things about real Irish life.'

Lara Fernandez, 22, Switzerland



Accommodation

ISI offers many accommodation options to ensure your time spent in Ireland is comfortable and enjoyable.

Residence

Our residence offers self-catering apartments all year round, mostly located 5–10 minutes' walk from the school. The apartments are let on a sharing basis with other international students and offer you an independent living experience in the city centre.

Host family

We can also offer host family accommodation in the suburbs. You can expect to commute for up to 40 minutes by bus or train to the city centre. Host families are a good option for those who require their meals to be included each week and who want to experience Irish family life.

Other options

ISI works with a variety of excellent accommodation providers, including hotels, guesthouses and hostels.

CUL DE SAC



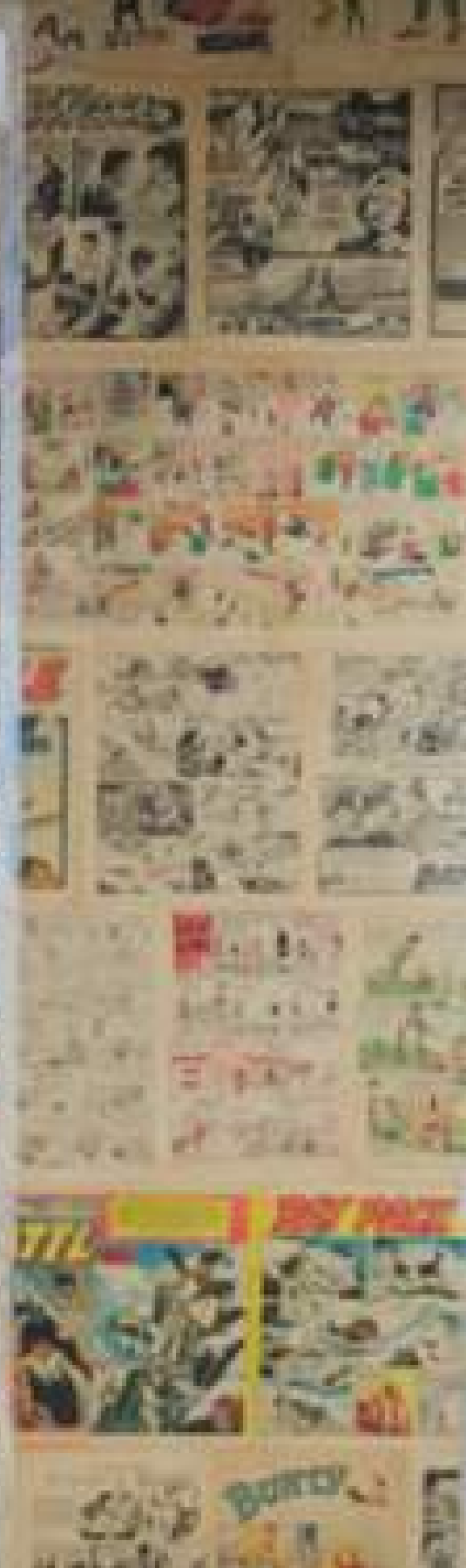




ISI, 4 Meetinghouse Lane, Mary's Abbey, Dublin 7.



ISI Parnell Sq. 39 Parnell Sq. West Dublin 1. ➔ Belvedere College, Great Denmark Street.



Frequently Asked Questions

Do I need a visa?

That depends on where you come from. Students from the EEA, Norway, Iceland, Switzerland and Liechtenstein do not need a visa to travel to or study in Ireland. Students from visa-waiver countries such as Brazil, Uruguay, Chile, Panama, Argentina, Mexico, USA, Canada, Japan, Korea and Taiwan do not need a visa to enter Ireland but must register after arrival. Students from visa-requiring countries such as Saudi Arabia, Venezuela, Turkey, Libya, Colombia, China, Russia, Pakistan and India require a visa in advance of travelling to Ireland. For full information please visit: www.inis.gov.ie. Go to 'Students' on left column and select visa type.

Will the school help me to register with immigration after arrival?

Yes, after you arrive at the school, we will take you through a step-by-step process of opening a bank account, applying for a social security number and registering with immigration.

How much money should I bring to Ireland for long-term study?

If you are from a country outside of the EEA, Norway, Iceland, Switzerland and Liechtenstein, you will be required to open a bank account in Ireland and place the sum of €3000 (for 6 months – 1 year) or €500 per month for shorter courses. You will also be required to pay a fee of €300 to register with immigration.

Can I work in Ireland?

Students from the EEA, Norway, Iceland, Switzerland and Liechtenstein can work legally in Ireland with the same conditions as Irish citizens. All students from outside these countries can work in Ireland only if they are in full-time education on an approved programme for a period of 25 weeks or more. In this brochure, these programmes are called Academic Year (see page 21). However, students on these programmes are limited to working 20 hours per week during course term and 40 hours per week during holidays.

Can I buy insurance through the school?

Yes, ISI supplies a very competitive insurance policy for students. Please consult our price list and stipulate on your application if you require this service.

Can you meet me at the airport in Dublin?

Yes, an ISI representative can meet you at the airport and bring you to your accommodation. Please consult our price list and stipulate on your application if you require this service.

When can I start my course?

You can start on any Monday, except during Christmas vacation and on bank holidays. Intensive Examination courses start on specific dates.

How big are the classes?

There is a maximum of 15 students in each language class.

Do I need to pass a test in order to enter your school?

Yes, all new English language students can do an English test online at www.studyinireland.ie.

Do you have any activities I can participate in after class?

ISI offers a full social programme all year round, as well as a range of free clubs and evening events.

See www.facebook.com/isi.ireland

for details. Students who are taking programmes in the afternoon at a discount, cannot participate in the afternoon social programme. However, each week there are clubs which commence after the afternoon classes, and usually at least one evening activity and one Saturday activity. In July/August there is a morning social programme.

What qualifications do your teachers have?

All English teachers have a degree and an ACELS recognized TEFL certificate.

How can I find information about Cambridge exams?

Your teacher can advise you on which examination will suit you.

Can I get a certificate at the end of my course?

All students must attend at least 85% of their English classes to receive the full certificate. Students who complete an English programme receive an in-house English certificate. Those who complete an International test such as FCE, CAE, TIE, Trinity ISE or IELTS, will also receive that certificate from the relevant examination body.

Can I use my laptop computer in the school?

Yes. There is free WiFi access throughout the building. We also have a computer suite with 10 computer points and webcams.

Will there be internet access or WiFi in my accommodation?


Internet access is not guaranteed in the accommodation.

When are school holidays?

The school is closed for Christmas / New year vacation for approximately two weeks. Please contact us for the exact dates each year. The school is also closed on the following national and bank holidays: March 17th, Easter Friday, Easter Monday, first Monday in May, June and August and the last Monday in October. There will be no classes on these dates and no reimbursement for classes missed.

More Questions?

Please visit our website at www.studyireland.ie and go to the "Frequently Asked Questions" page. Here you will find a more extensive list of questions and answers.

A photograph of a classroom. A teacher in a blue shirt and red skirt is standing and talking to a group of students seated at long wooden tables. The students are looking towards the teacher. The room has large windows and a brick wall. A blue text box is overlaid on the top right of the image.

'ISI has something different, that makes you enjoy Dublin as no other school. Brilliant teachers and support, unimaginable activities and amazing friends.'

Angie Arrieta, 19, Mexico



High School Placements

For over a decade, ISI has been placing overseas students into Irish High Schools (locally known as 'secondary school'). We have developed strong working relationships with each school and we employ dedicated staff to manage and organise the student's stay in Ireland.

Guardianship – AGPI

ISI is a founding member of the Association of Guardianship Providers Ireland, an organisation that seeks to regulate & professionalise the placement and guardianship of international students, aged 11-18, in Irish high schools. This further ensures our students are offered the highest standard of care.

Our services include

- Placement in one of over 30 excellent high schools in Ireland
- Involvement of parents in choosing a suitable location and school for their child
- Selection of high-quality host family and boarding accommodation
- Guardianship services from dedicated staff
- Weekly counselling and reporting system
- Mobile phone during first year of programme
- English language support to Dublin based students
- Social programme including parties, discos, movies, karaoke and quizzes
- 24-hour emergency telephone service

Please contact us to receive our Junior Programme Brochure.



Junior Programmes

Winter School Groups

ISI welcomes school groups from all over the world on 1 – 2 week packages from September to June each year. Along with excellent tuition and exciting activities, we offer a choice of accommodation, including host family, deluxe hostel or 3-star hotels. Our packages are competitively priced and include:

- Return airport transfers
- Full board accommodation
- 20 X 45-minute lessons (15 hours)
- Course materials
- ‘Free entry’ social programme led by an ISI social rep.
- 1 Saturday walking tour
- 1 free group leader per 15 students
- Refreshments during breaks

In addition to the basic package, groups may choose from a range of paid ‘add-on’ activities which include half-day and full-day excursions around Dublin and Ireland and some evening activities such as Irish dance shows, bowling or cinema.

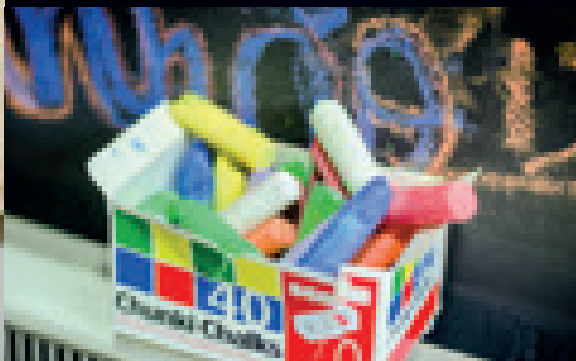
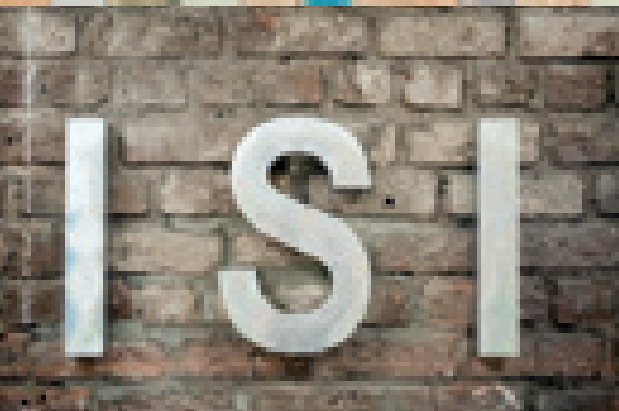
Junior Summer Camp

The ISI *English in Action* summer camp is a fun and exciting way for teenagers to learn English. Located in the prestigious Belvedere College high school campus in the city centre, just five minutes from O’Connell Street, the programme includes 20 hours tuition per week and over 30 hours of stimulating sporting, social and cultural activities.

Classes combine General English with task-based lessons where we put English into action through fun activities aimed at building confidence when using English in everyday situations. The modules include drama, music, Irish culture and project work. Our friendly host families live 35 minutes from the city centre, with direct access by public transport.

The activity programme combines sporting, cultural and fun activities designed to keep the students engaged and inspired. Our programme includes activities every afternoon, two evenings per week and 1 full-day bus tour at the weekend, so students will have a fun-packed experience they will remember for life. The summer camp is open to both group and individual applicants.

Please contact us to receive our Junior Programme Brochure.



At ISI we love what we do. We don't just teach courses, we offer you a complete experience, combining the best academic programmes with high-quality accommodation, an exciting social programme, interesting student clubs, great evening events and adventurous weekend excursions.

Academic excellence is at the heart of what we do. ISI is recognised by Quality and Qualifications Ireland for English language teaching. We are also a recognised examination preparation centre for the Trinity Integrated Skills in English (ISE), Test of Interactive English (TIE), Cambridge Examinations and IELTS. Using the most advanced teaching methods and the newest technology, our students achieve a very high exam success rate.

- ▶ English Language School
- ▶ School Groups
- ▶ Summer Camp
- ▶ High School

ISI  **Dublin**
studyinireland.ie
info@isi-ireland.ie
tel: + 353-1-8727888
www.facebook.com/isi.ireland

